

## Deja Blue Eco-Wellness Resort residential complex

Location **Kyrenia, Bahçeli**



### About the project



**Developer** Evergreen Developments

**Start of sale** 01.06.2021

**Key handover** 2024

**Houses/blocks** 13

**Building floor** 2 Min 2 Max

**Units total** 64 - Studio, 24 - 1+1, 18 - 2+1 Apartments, 15 - 3+1 Bungalows, 12 - 4+1 Villas

Distance to the sea - 100 m

Distance to key locations:  
 5 min from Esentepe - 20 min from Kyrenia - 5 min from Korenium Golf Resort, University - 26 km, Airport - 35 km, Shops and markets - 2 km, Primary schools - 8 kilometers

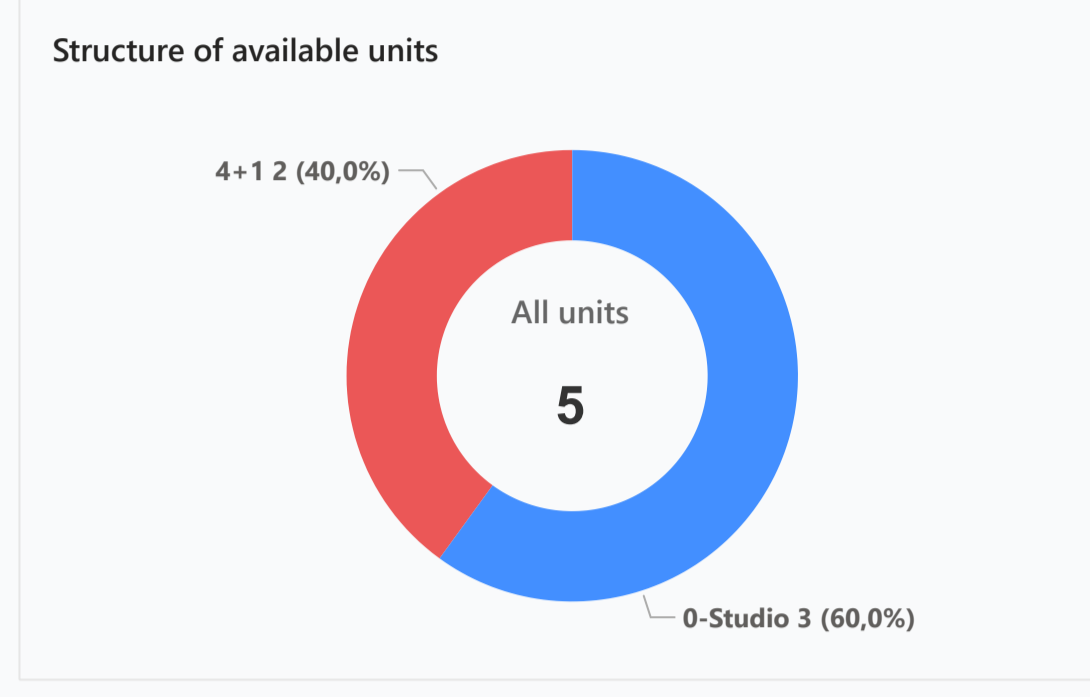
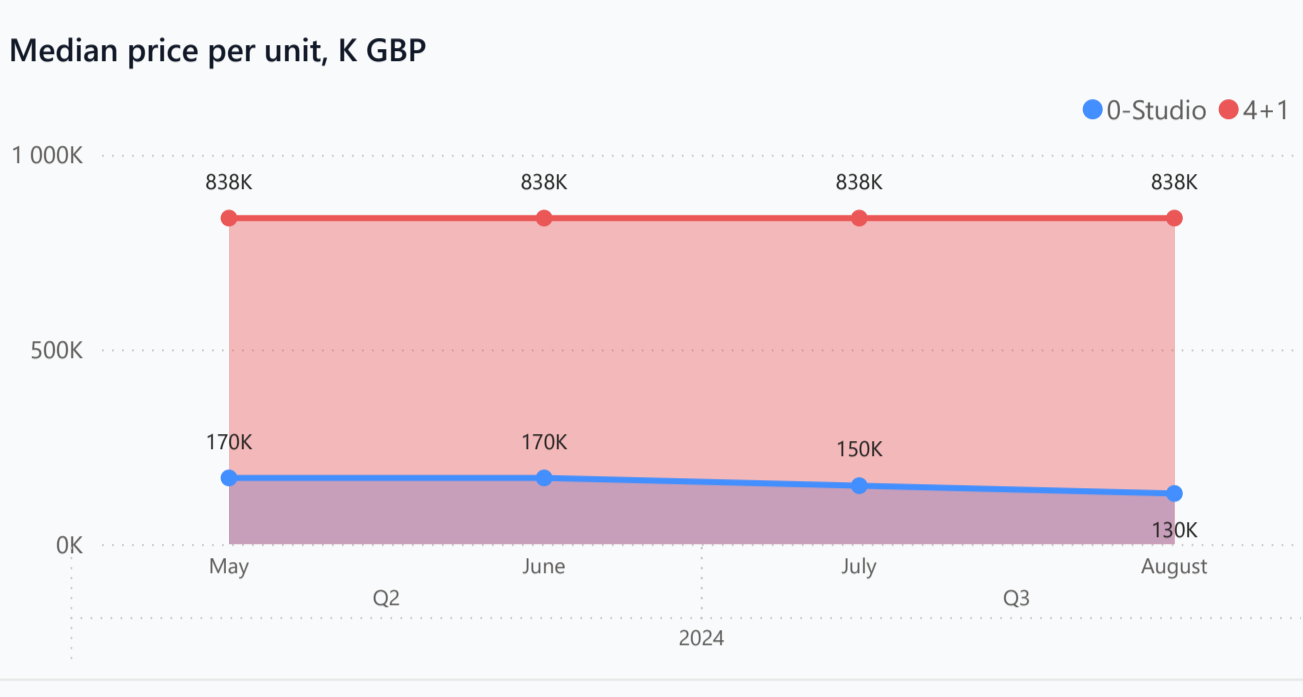
As part of the concept "health, wellness and anti-aging programs, or eternal youth", which is the main theme of the project, the site houses the island's first aquaponic and hydroponic gardens, as well as the island's first and only biological pools on the island.

Just a 5-minute walk from the project there is a professional 18-hole golf course, which is designed on 5 fields of different heights, offering magnificent panoramic views of the sea.

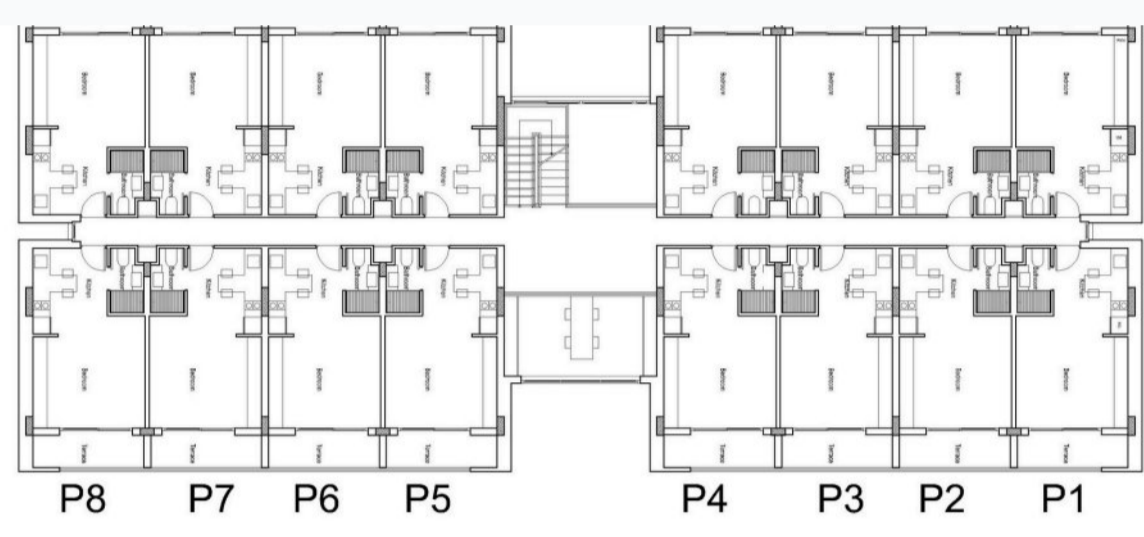
### Complex infrastructure

- Open pool
- Parking

### Available units 5 / 140 total



### Plans



0-Studio



4+1

### Payment plans Deposit (non-refundable) 2000-5000 GBP for a month

Option	Down payment	Installments months	Discount	Offer
Option 1	50 %	18	-	-
Option 2	-	-	-	-
Option 3	-	-	-	-
Option 4	-	-	-	-

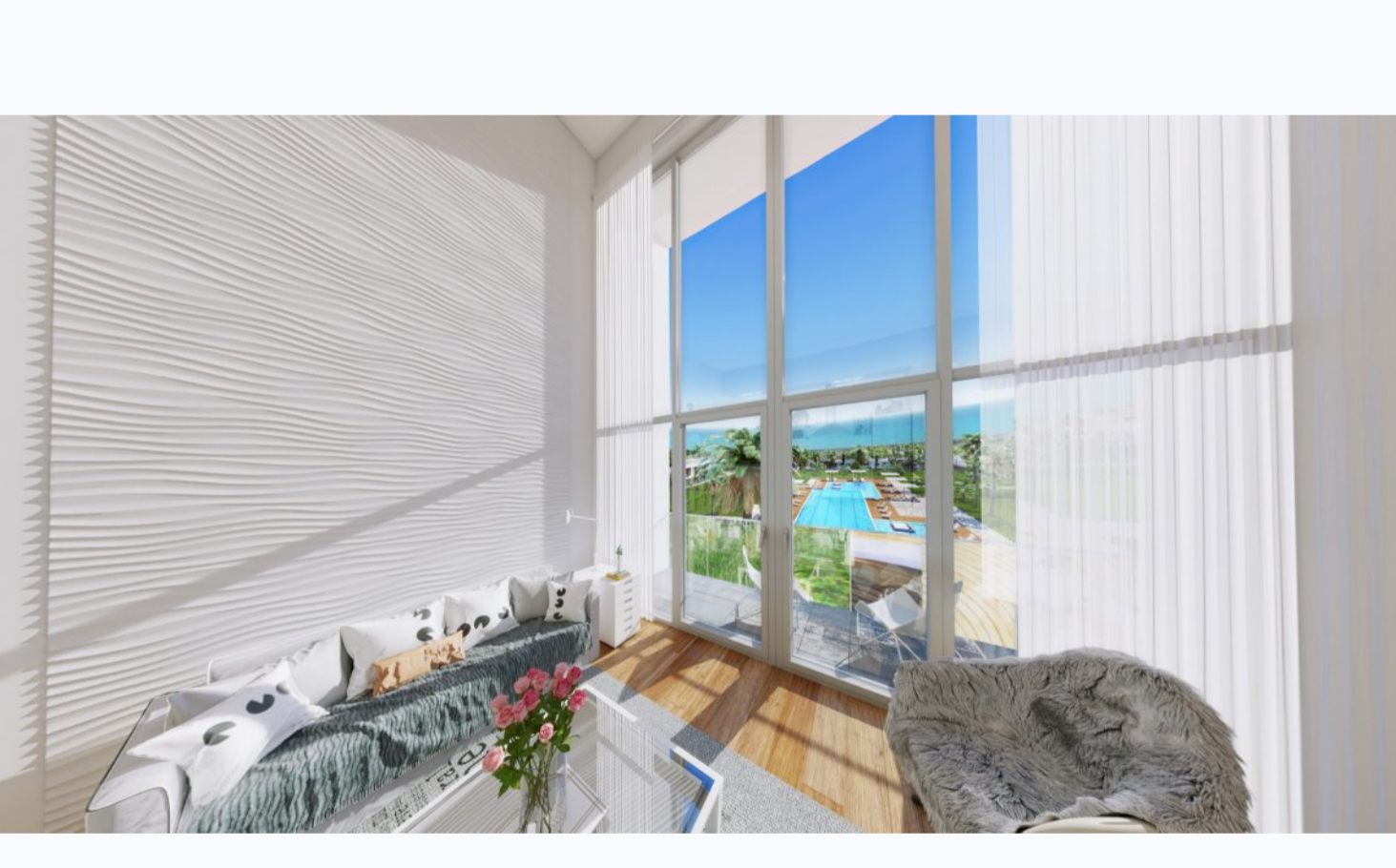
Special offer: Fully furnished design package, Rental guarantee

Trafo (Blank) GBP, Resale after 70%, Maintenance fee -, Rental services 40% comission on...

#### Details

Bedrooms	Subtype	Block	Unit №	Floor	View	Bathroom	Internal area, sq. m	Balcony/ Terrace, sq. m	Rooftop terrace, sq. m	Garden, sq. m	Gross covered area, sq. m	Current price, GBP	Price per sqm, GBP
0-Studio	Flat	S	S1-G11	0		1	33	4			37	120 000	3 243
0-Studio	Flat	S	S2-G8	0		1	33	4			37	130 000	3 514
0-Studio	Flat	S	S2-P5	01		1	33	4	18		55	170 000	3 091
4+1	Villa	V	V10	0		4	210	40	30		280	825 000	2 946
4+1	Villa	V	V6	0		4	210	40	30		280	850 000	3 036

### Interior specification



- #### Interior specification
- Ceramic flooring
  - Double glazed windows
  - Laminate flooring in the bedrooms

### Exterior specification



- #### Exterior specification
- Glass fence balcony
  - Landscape design
  - Private Garden
  - Private pool
  - Terracing with inbuilt lighting & power sockets

### Location of complex

